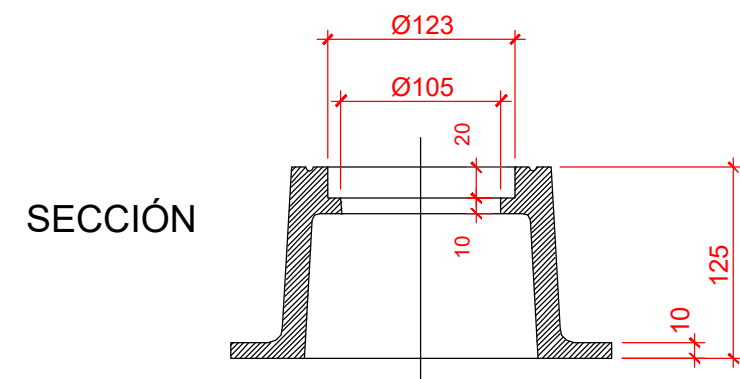
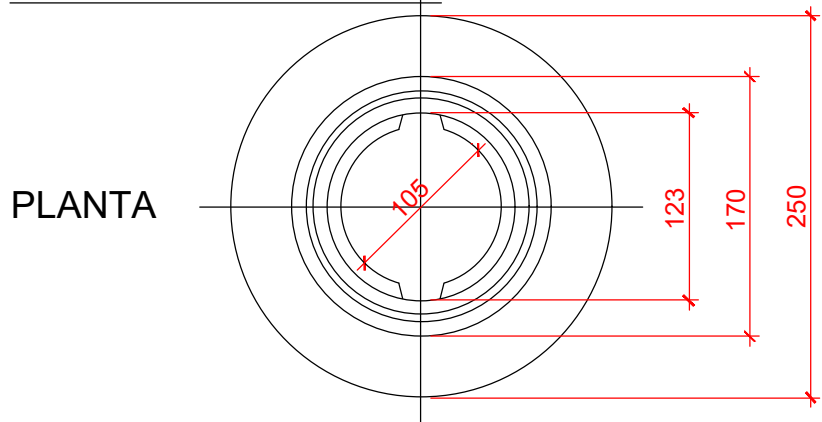
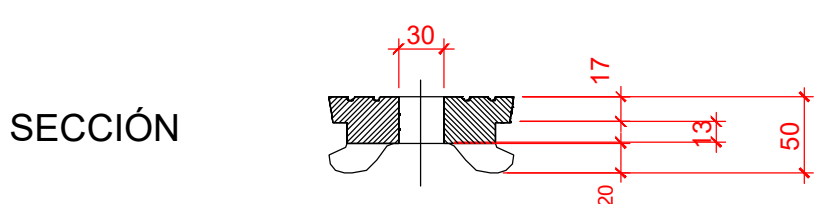
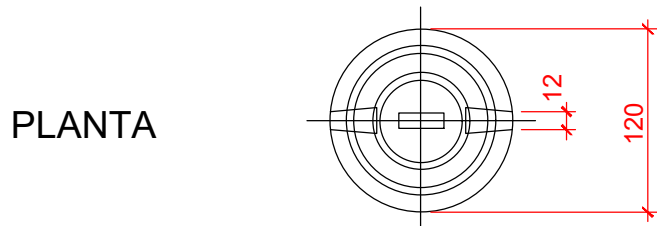


TRAMPILLON CON ARQUETA
E= 1:10
Cotas en mm.

CUELLO REGISTRO



TAPE

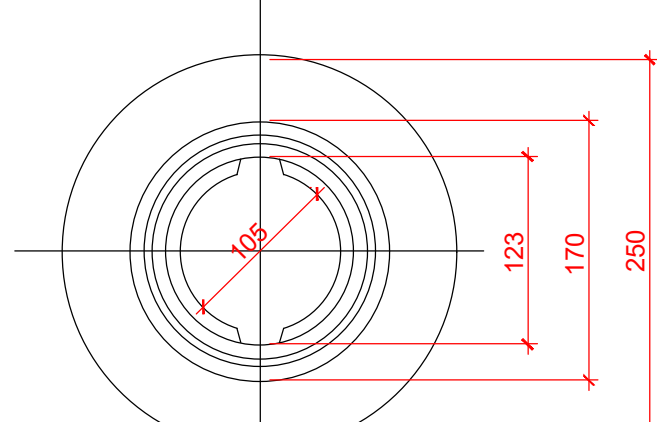


NORMA EN-124
CALIDAD EN-1563
MATERIAL EN-GJS-500-7

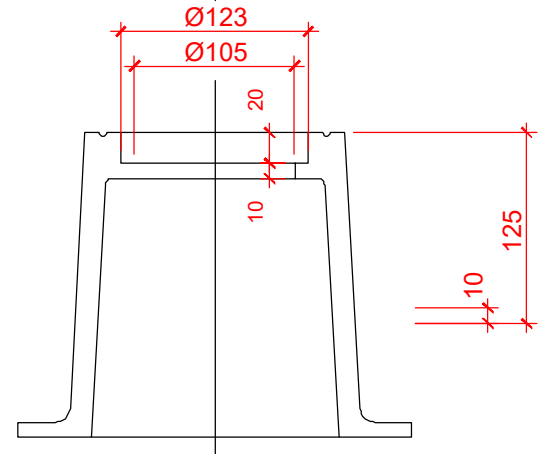
PESO > 11 Kgs.

TRAMPILLON SIN ARQUETA
E= 1:10
Cotas en mm.

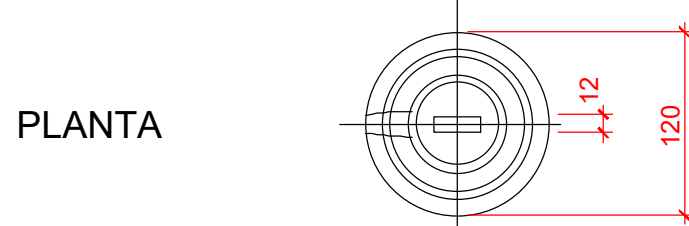
PLANTA



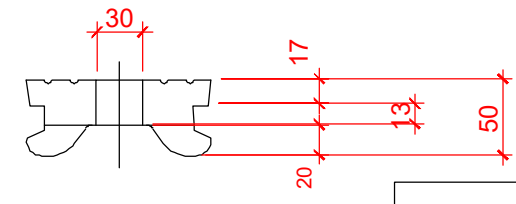
SECCIÓN



TAPE

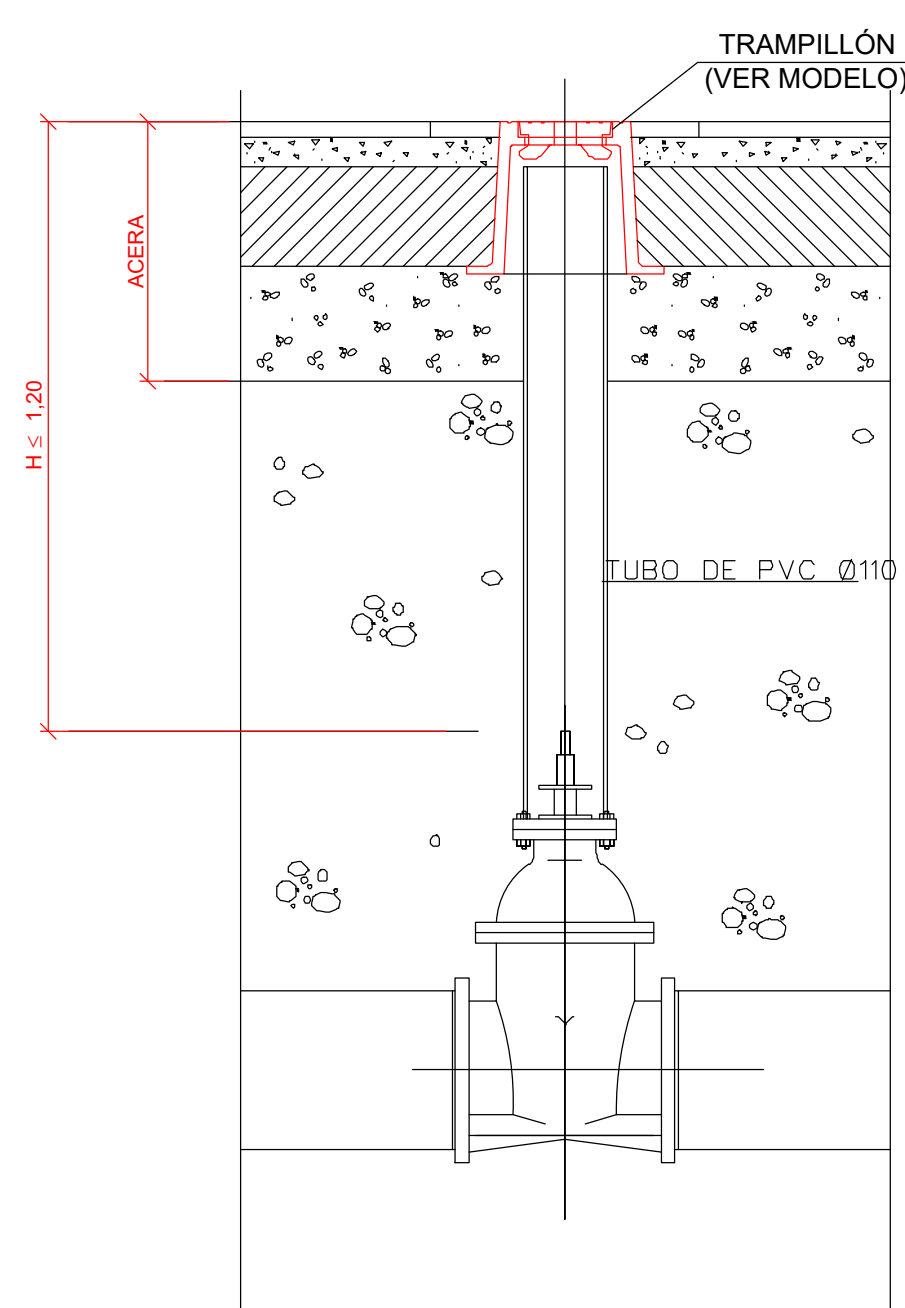


SECCIÓN

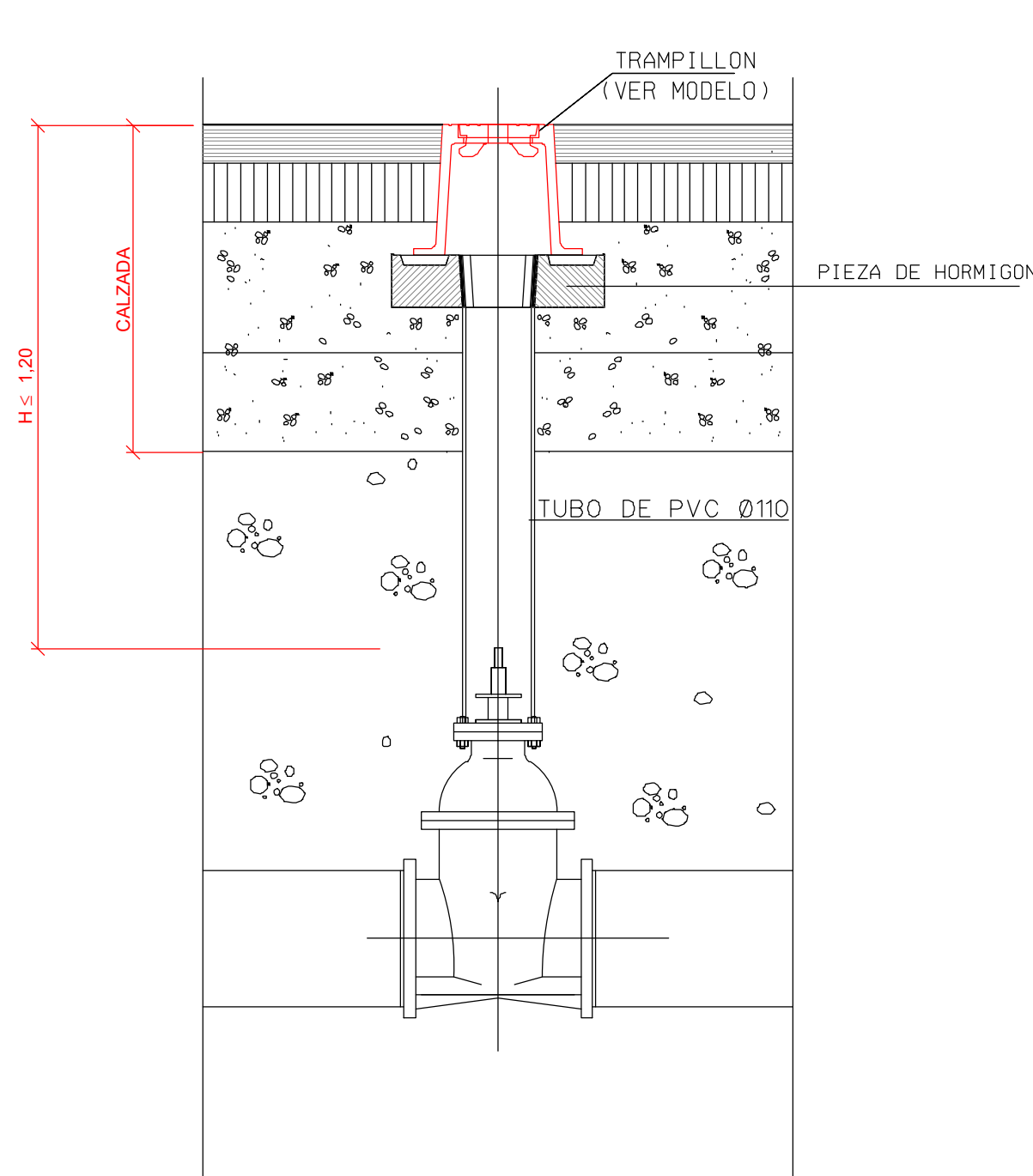


NORMA EN-124
CALIDAD EN-1563
MATERIAL EN-GJS-500-7

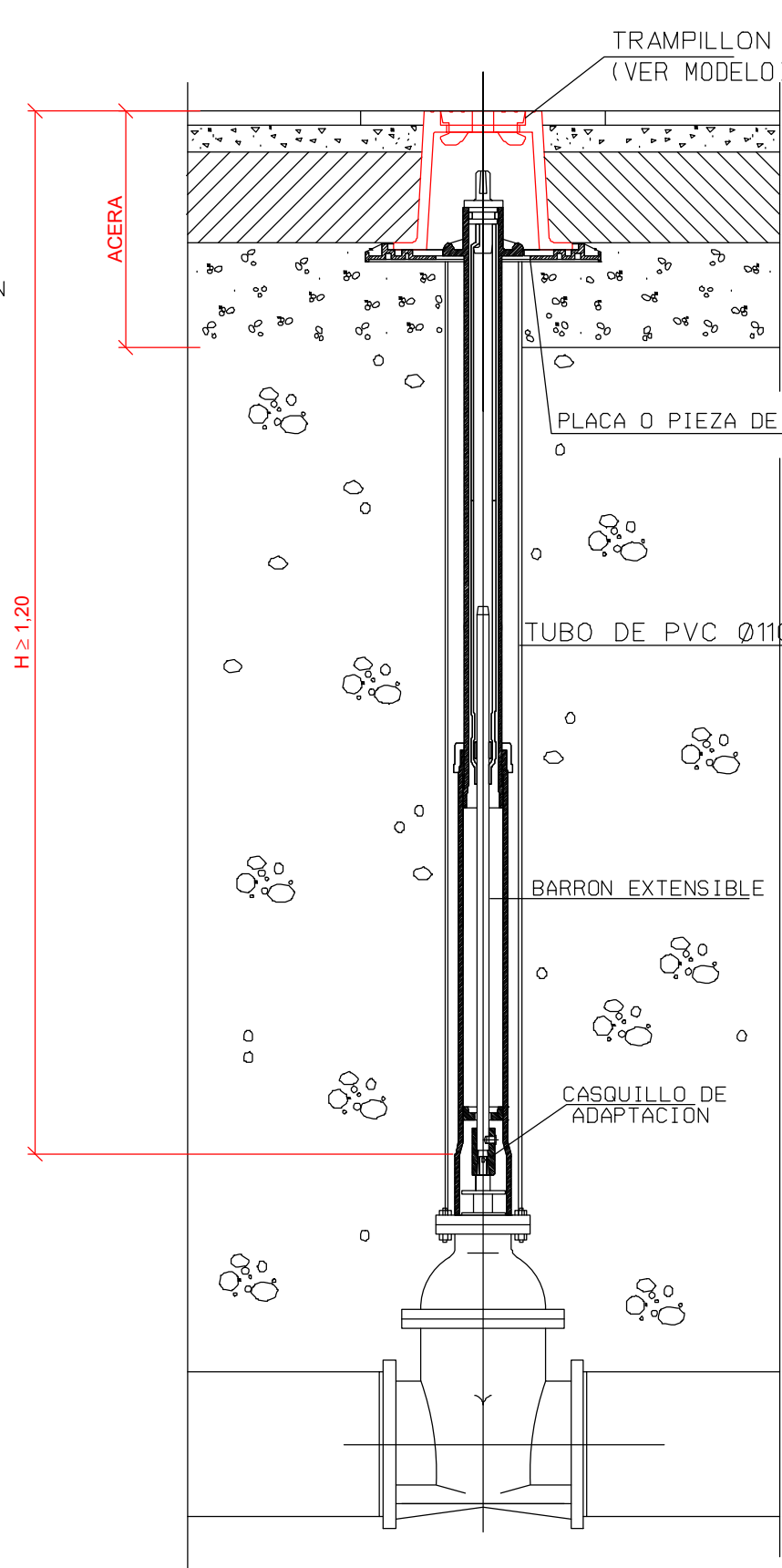
TRAMPILLON EN ACERAS H=< 1,20 m
(CON TUBO DE PVC)
E= 1:20



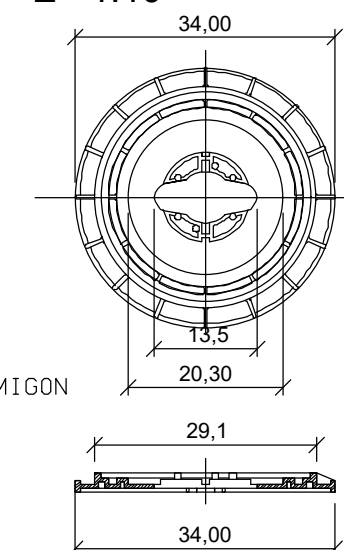
TRAMPILLON EN CALZADA H=< 1,20 m
(CON TUBO DE PVC)
E= 1:20



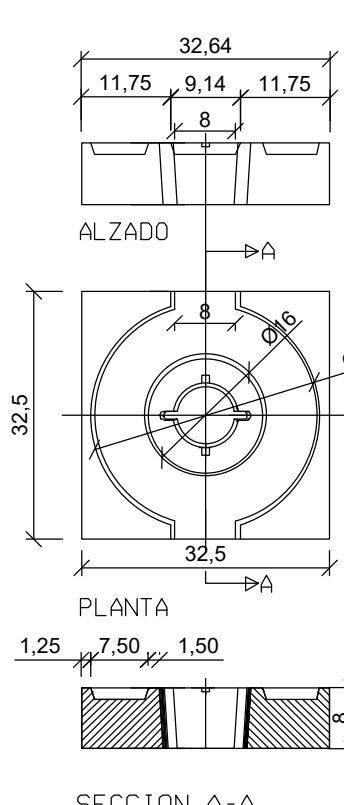
TRAMPILLON EN ACERAS H=> 1,20 m
(CON BARRÓN EXTENSIBLE)
E= 1:20



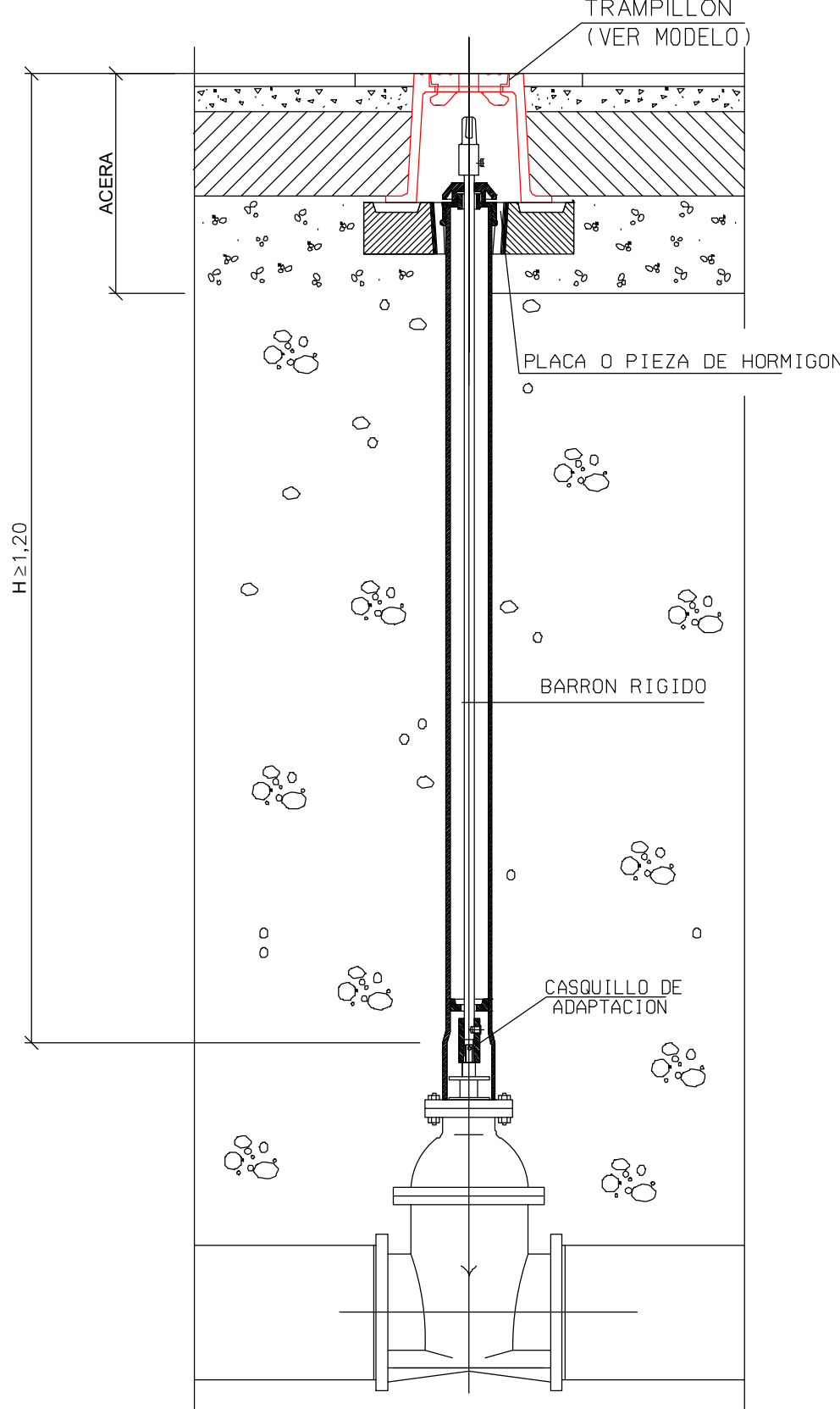
DETALLE PLACA BASE
E= 1:10



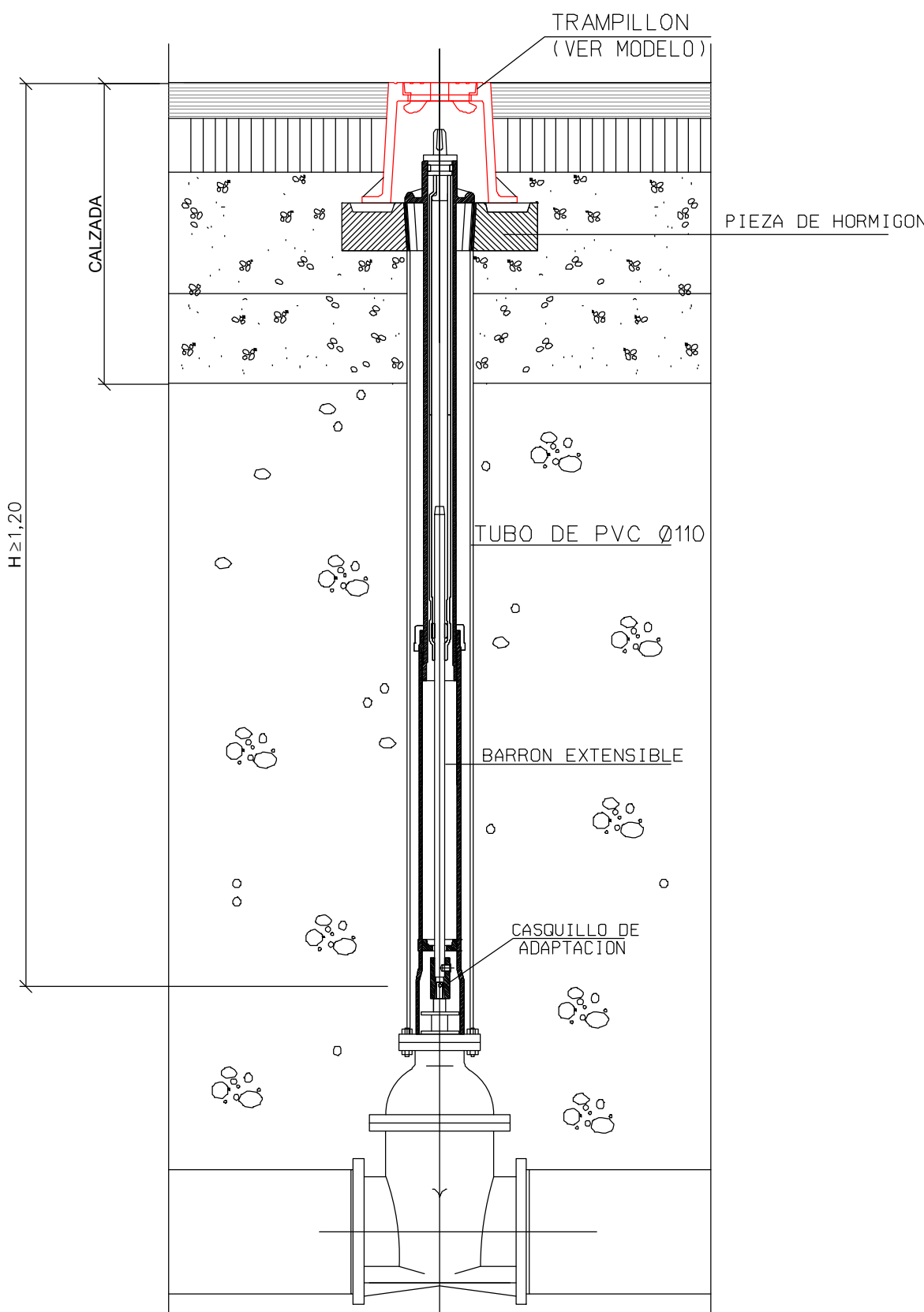
DETALLE DE PIEZA PREFABRICADA DE HORMIGÓN
E= 1:10



TRAMPILLON EN ACERAS H=> 1,20 m
(CON BARRÓN RÍGIDO)
E= 1:20



TRAMPILLON EN CALZADA H=> 1,20 m
(CON BARRÓN EXTENSIBLE)
E= 1:20



TRAMPILLON EN CALZADA H=> 1,20 m
(CON BARRÓN RÍGIDO)
E= 1:20

